

Indirect impact of the COVID-19 pandemic and its containment measures on social inequalities in hospital utilisation in Italy

Chiara Di Girolamo ,¹ Roberto Gnani ,² Tania Landriscina,² Silvia Forni,³ Manuele Falcone,³ Enrico Calandrini,⁴ Giulia Cesaroni,⁴ Antonio Russo ,⁵ Olivia Leoni,⁶ Caterina Fanizza,⁷ Alessandra Allotta,⁸ Giuseppe Costa,⁹ Teresa Spadea,² the MIMICO-19 working group

► Additional supplemental material is published online only. To view, please visit the journal online (<http://dx.doi.org/10.1136/jech-2021-218452>).

For numbered affiliations see end of article.

Correspondence to

Dr Chiara Di Girolamo, Regional Health and Social Care Agency Emilia-Romagna Region, Bologna 40127, Italy; chiara.digirolamo@regione.emilia-romagna.it

Received 18 November 2021
Accepted 28 April 2022

ABSTRACT

Background The pandemic may undermine the equity of access to and utilisation of health services for conditions other than COVID-19. The objective of the study is to evaluate the indirect impact of COVID-19 and lockdown measures on sociodemographic inequalities in healthcare utilisation in seven Italian areas.

Methods In this multicentre retrospective study, we evaluated whether COVID-19 modified the association between educational level or deprivation and indicators of hospital utilisation and quality of care. We also assessed variations in gradients by sex and age class. We estimated age-standardised rates and prevalence and their relative per cent changes comparing pandemic (2020) and pre-pandemic (2018–2019) periods, and the Relative Index of Inequalities (RIIs) fitting multivariable Poisson models with an interaction between socioeconomic position and period.

Results Compared with 2018–2019, hospital utilisation and, to a lesser extent, timeliness of procedures indicators fell during the first months of 2020. Larger declines were registered among women, the elderly and the low educated resulting in a shrinkage (or widening if RII < 1) of the educational gradients for most of the indicators. Timeliness of procedures indicators did not show any educational gradient neither before nor during the pandemic. Inequalities by deprivation were nuanced and did not substantially change in 2020.

Conclusions The socially patterned reduction of hospital utilisation may lead to a potential exacerbation of health inequalities among groups who were already vulnerable before the pandemic. The healthcare service can contribute to contrast health disparities worsened by COVID-19 through more efficient communication and locally appropriate interventions.

INTRODUCTION

The COVID-19 pandemic and the control measures adopted since its inception have had a short-term and medium-term impact on the supply of and access to preventive and curative health services globally, for a multiplicity of acute and chronic health conditions, including urgent ones, regardless of the burden of the epidemic in each area.^{1 2}

WHAT IS ALREADY KNOWN ON THIS TOPIC

- ⇒ During the first pandemic months, there was a general reduction in hospital utilisation.
- ⇒ The way the pandemic is undermining the equity of access to and utilisation of health services for conditions other than COVID-19 has been only partially explored.

WHAT THIS STUDY ADDS

- ⇒ This Italian multicentre study showed that during the first 7 pandemic months, women, the elderly and the low educated experienced the greatest drop in hospitalisation for acute conditions, scheduled surgery and oncological surgery compared with 2018–2019, with resulting changes in the educational gradient.
- ⇒ Patients' hospital management was not affected by socioeconomic position.
- ⇒ Midterm and long-term consequences of socially patterned reductions in hospital utilisation can deepen existing health inequalities and the healthcare service should contribute to contrast them.

HOW THIS STUDY MIGHT AFFECT RESEARCH, PRACTICE AND/OR POLICY

- ⇒ The healthcare service can contribute to contrast health disparities worsened by COVID-19 through communication strategies tailored to different health literacy levels on how and when to safely access care and through the strengthening of primary care and preventive services to implement appropriate interventions and foster community empowerment.
- ⇒ The implementation of systematic, comprehensive and timely monitoring systems of health inequalities requires the availability of up-to-date socioeconomic information on health databases.

The Italian network MIMICO-19 was set up in early 2020 to estimate the indirect effects of the pandemic on hospital utilisation and quality of care in seven regions representing the country. Early findings showed that during the first wave, access to the emergency room (ER), and hospitalisation for



© Author(s) (or their employer(s)) 2022. No commercial re-use. See rights and permissions. Published by BMJ.

To cite: Di Girolamo C, Gnani R, Landriscina T, et al. *J Epidemiol Community Health* Epub ahead of print: [please include Day Month Year]. doi:10.1136/jech-2021-218452

cardiovascular diseases and for planned or oncological surgery dropped. Conversely, the timeliness of time-dependent interventions remained unchanged.³

Inequalities in access to healthcare are well documented, even in universal health systems.⁴ The contraction in healthcare supply and utilisation caused by the SARS-CoV-2 epidemic can potentially exacerbate social inequalities in health in the context of a syndemic pandemic resulting from the interaction between the unequal distribution of the COVID-19 burden, the non-communicable diseases and the social determinants of health.^{5,6} However, whereas there is a mounting literature unveiling the socially patterned nature of the pandemic and showing that COVID-19 risks and unfavourable outcomes are higher among black and minority ethnic groups,⁷ and individuals from socioeconomically deprived backgrounds,^{8–10} little is known about the indirect effects of COVID-19 on health and healthcare inequalities. Despite early concerns about the disproportionately large negative impact of the disruption of care on vulnerable populations,¹¹ to the best of our knowledge, only few studies have investigated how the pandemic is undermining the equity of access to and utilisation of health services for conditions other than COVID-19.^{12–14}

The main objective of the study is therefore to evaluate the indirect impact of COVID-19 and related containment measures on socioeconomic inequalities in hospital utilisation and quality of care through a selection of validated indicators in Italy. The secondary objective is to assess potential variations in gradients by sex and age class.

METHODS

Study design, population and data sources

This is a multicentre retrospective study carried out within the MIMICO-19 network³ and based on the individual record linkage of regional health administrative and statistical data sources via a unique anonymous key.¹⁵ Socioeconomic information relevant for the study was available for five regions (Piedmont, Emilia-Romagna, Tuscany, Puglia, Sicily) and two metropolitan areas: the local health unit of Milan (ATS Milan) and the municipality of Rome.

The study population, derived from the health population registers, consisted of the residents as of 1 January 2018 in each of the above-mentioned geographical areas aged ≥ 30 years in 2011 and still alive during the observation time.

We considered two observation periods: (1) pandemic period; (2) comparison period covering the average of the corresponding subperiods in 2018–2019.

Hospital discharge and ER archives were used to retrieve the outcomes of interest. The last census, held in 2011, was the source of the information on the socioeconomic position (SEP) measured through the individual educational level in adulthood (ie, in those aged ≥ 30 years) and the deprivation index at the census block level.¹⁶

Outcomes

We chose 12 indicators of hospital utilisation and quality of care encompassing several clinical areas and validated within the National Healthcare Outcomes Programme, an evaluation programme run by the National Agency for Regional Healthcare Services.¹⁷ Hospital utilisation was assessed through indicators of volume, defined as absolute number of cases or procedures: five for acute conditions, two for scheduled surgery and three for oncological surgery. To represent the healthcare quality, we chose two indicators of timeliness of procedures. For each indicator, we included all episodes registered in the study population

within the two observation periods. Table 1 reports the indicators, the International Classification of Diseases, Ninth Revision codes used in their definition and their availability.

Exposures and other variables

Educational level was our primary SEP indicator, because it is a reliable measure that bridges socioeconomic conditions from early life to adulthood.¹⁸ It was classified into three levels according to the highest attained qualification: low (primary education or less, corresponding to the 0–1 levels of the International Standard Classification of Education 1997, modified in 2011 (ISCED-11),¹⁹ middle (lower secondary and short-cycle upper secondary education, ISCED-11: 2–3C), high (from completed upper secondary onwards, ISCED-11: from 3A/B upwards). However, information on education was only available for three regions (Piedmont, Emilia-Romagna, Puglia) and the municipality of Rome.¹⁵ Therefore, we also used the deprivation index at the census block, as a proxy of individual SEP,²⁰ which was available for all geographical areas included in the study. It was grouped into five quintiles (1 less deprived, 5 more deprived) and used in the secondary analyses whose results are commented in the text but only reported in the online supplemental material.

Age was classified into 5-year age bands (30–34, 35–39, ..., 85+) for adjustment and into two groups (30–64, 65+) for stratification.

Statistical analyses

All analyses were carried out for each sex and age group to explore whether differences exist within these population strata.

To assess whether the association between SEP and outcomes was modified by the pandemic and the lockdown measures, we employed both a descriptive and an analytical approach.

First, we estimated age-standardised rates (number of episodes/population) for the volume indicators and age-standardised prevalence (number of procedures/total access eligible for that procedure) for the indicators of timeliness of procedures through direct standardisation using the 2013 European standard population.²¹ Standardised rates were stratified by observation period and SEP indicator. To assess changes over time for each SEP stratum, we computed relative per cent changes as the ratio between the difference of rates or prevalence in the pandemic and the pre-pandemic periods and the rates or prevalence in the pre-pandemic period.

Second, we fitted Poisson models (with robust errors for process indicators²²) adjusted for age and geographical area, and with an interaction term between SEP indicators and period. Through these models, we estimated the Relative Index of Inequality (RII), a summary measure that quantifies the social gradient in relative terms,²³ for both the pandemic and the pre-pandemic periods. Values above 1 indicate worse outcomes in the most disadvantaged group whereas those below 1 in the most advantaged one. To test the interaction, we used the likelihood ratio test for volume indicators and the Wald test for timeliness of procedures indicators.

RESULTS

Inequalities by educational level

The four areas included in the main analysis cover approximately 9.5 million people, about 20% of the Italian inhabitants aged ≥ 30 years. Piedmont and Emilia-Romagna contribute for about 30% each, Rome for the 17%, and Puglia for the 25%; 42% and 47% of male and female population, respectively, were aged

Table 1 List of indicators with their selection criteria (ICD-9-CM codes, and age and sex where applicable) and geographical availability

Category	Indicator	ICD-9-CM diseases codes and other classifications	Geographical availability
Volumes: acute conditions	Total access to emergency room (ER)	Not applicable	All
	Access to ER for life-threatening conditions (ER emergency)	Triage code: red (life-threatening condition requiring immediate care)	All except Tuscany and Rome
	Hospitalisation for ST-elevation myocardial infarction (STEMI)	Diseases: 410.xx, excluding 410.7x, 410.9x	All
	Hospitalisation for ischaemic stroke	Diseases: 433.x1, 434.x1, 436 excluding 430, 431, 432.x	All
	Hospitalisation for femoral neck fracture in subject aged ≥ 65 years	Diseases: 820.xx and age ≥ 65 (excluding rehabilitation and long-term care)	All
Volumes: scheduled surgery	Knee replacement surgery	Procedures: 81.54, 81.55, 00.80, 00.81, 00.82, 00.83, 00.84	All
	Benign prostatic hyperplasia surgery	Diseases: 600.xx, 601.xx, 602.0, 602.1, 602.2, 788.2x, 788.4x; procedures: 60.2x, 60.96, 60.97, men	All
Volumes: oncological surgery	Surgery for malignant neoplasm of breast	Diseases: 174.x, 198.81, 233.0 and procedures: 85.2x, 85.33, 85.34, 85.35, 85.36, 85.4x, women	All
	Surgery for malignant neoplasm of lung	Diseases: 162.2, 162.3, 162.4, 162.5, 162.8, 162.9, 197.0 and procedures: 32.3, 32.4, 32.5, 32.6, 32.9, 32.29	All
	Surgery for malignant neoplasm of colon and rectum	Colon: diseases: 153.x, 197.5 and procedures: 45.7x, 45.8, 45.9x, 46.03, 46.04, 46.1x; excluded diseases: 48.49, 48.5, 48.6 Rectum: diseases: 154.x, 197.5 and procedures: 48.49, 48.5, 48.6x; excluded procedures: 45.7x, 45.8, 45.9x, 46.03, 46.04, 46.1x	All
Timeliness of procedures	Percutaneous transluminal coronary angioplasty interventions within 90' in patients with STEMI	Numerator: procedures 00.66, 36.01, 36.02, 36.05, 36.06, 36.07 within 90' from admission Denominator: diseases: 410.xx, excluding 410.7x, 410.9x	All except ATS Milan, Emilia-Romagna, Tuscany
	Surgery within 2 days in femoral neck fracture in subject aged ≥ 65 years	Numerator: procedures 81.51, 81.52, 79.00, 79.05, 79.10, 79.15, 79.20, 79.25, 79.30, 79.35, 79.40, 79.45, 79.50, 79.55 within 2 days from the admission Denominator: diseases: 820.xx in subjects aged ≥ 65 years	All

ICD-9-CM, International Classification of Diseases, Ninth Revision, Clinical Modification.

>65 years (table 2). During the first 7 months of the pandemic, volumes of total access to ER and scheduled surgery dropped by approximately one-third compared with 2018–2019; the lowest reduction was registered for the malignant lung cancer surgery with a 4% decline among men and a 9% increase among women (absolute numbers for 2018–2019 are reported in online supplemental table 1).

Figure 1 shows the relative per cent changes in the age-standardised rates and prevalence by sex and age groups (underlying rates and details of per cent changes are reported in online supplemental table 2). Both rates and prevalences were generally lower during the pandemic year compared with 2018–2019. Besides, relative per cent reductions of volumes rates were generally greater among the low educated of both sexes and age groups; on the contrary, reductions on the prevalence of timely procedures were less pronounced and not explicitly socially patterned. Women experienced larger declines than men. Subjects aged ≥ 65 years experienced the greater contraction in hospital volumes compared with the younger counterpart, except for access to the ER in both sexes and timeliness of percutaneous transluminal coronary angioplasty (PTCA) among women.

These differential reductions were mirrored in the changes in the social gradient of volumes and timeliness indicators measured through the RII. For most of the indicators, educational differences were evident both in 2018–2019 and in 2020; however, during the 7 months of 2020, greater rates' drops occurred among the low educated and therefore the gradient for all volume indicators either shrank (for those whose risk was greater than 1, eg, total ER access) or widened (for those whose risk was close to or lower than 1, eg, prostatic hyperplasia surgery) (figure 2).

Furthermore, there was an interaction between educational level and period suggesting significant changes in the educational gradient in 2020 for all volume indicators in both sexes. In the analyses by age group (figure 3), educational differentials were wider among men and people aged 30–64 years than their counterparts, although the uncertainty of the estimates was greater among the youngest mainly due to a small number of events in this age group. Moreover, some interactions lost their statistical significance. In the age group 30–64 years, reductions of the gradient remained significant only for ER access in both sexes and for indicators of prostatic hyperplasia surgery in men and breast cancer surgery in women. In the age group ≥ 65 years, the educational gradient significantly narrowed for indicators of ER access and scheduled surgery in both sexes, and for indicators of acute cardiovascular conditions (ST-elevation myocardial infarction (STEMI) and ischaemic stroke) and lung cancer surgery among women.

Conversely, indicators of timeliness of procedures did not show neither a gradient nor relevant changes across time in both sexes and age groups.

Inequalities by deprivation index

The seven geographical areas for which the deprivation index was available totalled about 16 million individuals, one-third of the Italian population aged ≥ 30 years (online supplemental table 3).

Relative per cent changes in the age-standardised rates for volume indicators and prevalence for timeliness of procedures indicators did not show a clear social gradient meaning that they were not consistently higher among the more or less deprived

Table 2 Age and geographical distribution of the population, absolute number (N) and column and row percentage (%) of hospital volumes and timeliness of procedures in 2020 and per cent change from 2020 to 2018–2019 by educational level and sex

	Men						Women										
	Total			Educational level			Total			Educational level							
	N	%	%	Low	Middle	High	N	%	%	Low	Middle	High					
													N	%	%	N	%
Population																	
Total	4 494 291	100	100	853 490	19.0	1783 627	39.7	1857 174	41.3	5 134 520	100	1428 677	27.8	1 709 058	33.3	1 996 785	38.9
Age group																	
30–64	2 606 502	58.0	58.0	1 442 211	5.5	1 170 080	44.9	1 292 201	49.6	2 728 894	53.1	1 732 263	6.3	1 058 505	38.8	1 497 126	54.9
≥65	1 887 789	42.0	42.0	709 269	37.6	613 547	32.5	564 973	29.9	2 405 626	46.9	1 255 414	52.2	650 553	27.0	499 659	20.8
Geographical area																	
Piedmont	1 290 467	28.7	28.7	242 662	18.8	566 651	43.9	481 154	37.3	1 463 918	28.5	398 520	27.2	565 522	38.6	499 876	34.1
Emilia-Romagna	1 342 618	29.9	29.9	255 449	19.0	544 722	40.6	542 447	40.4	1 492 872	29.1	400 592	26.8	498 879	33.4	593 401	39.7
Rome	722 773	16.1	16.1	75 723	10.5	212 865	29.5	434 185	60.1	891 125	17.4	154 230	17.3	245 348	27.5	491 547	55.2
Puglia	1 138 433	25.3	25.3	279 656	24.6	459 389	40.4	399 388	35.1	1 286 605	25.1	475 335	36.9	399 309	31.0	411 961	32.0
Indicators of hospital volumes and timeliness of procedures																	
	Men						Women										
	Total			Educational level			Total			Educational level							
	N	%	Per cent change vs 2018–2019	Low	Middle	High	N	%	Per cent change 2020 vs 2018–2019	Low	Middle	High					
													N	%	%	N	%
Total access to emergency room	595 599	-33.7	-33.7	161 428	27.1	249 144	41.8	185 027	31.1	575 670	-39.2	210 043	36.5	194 423	33.8	171 204	29.7
30–64	290 161	-33.1	-33.1	23 925	8.2	151 785	52.3	114 451	39.4	255 816	-39.2	20 388	8.0	112 623	44.0	122 805	48.0
≥65	305 438	-34.4	-34.4	137 503	45.0	97 359	31.9	70 576	23.1	319 854	-39.2	189 655	59.3	81 800	25.6	48 399	15.1
Access to emergency room for life-threatening conditions	18 544	-7.8	-7.8	7847	42.3	6515	35.1	4182	22.6	15 678	-12.5	9600	61.2	3757	24.0	2321	14.8
30–64	4797	-5.5	-5.5	522	10.9	2647	55.2	1628	33.9	2401	-13.8	290	12.1	1179	49.1	932	38.8
≥65	13 747	-8.6	-8.6	7325	53.3	3868	28.1	2554	18.6	13 277	-12.3	9310	70.1	2578	19.4	1389	10.5
Access for ST-elevation myocardial infarction	4117	-6.6	-6.6	1063	25.8	1706	41.4	1348	32.7	1681	-15.7	877	52.2	488	29.0	316	18.8
30–64	1646	3.5	3.5	151	9.2	854	51.9	641	38.9	294	1.7	44	15.0	154	52.4	96	32.7
≥65	2471	-12.4	-12.4	912	36.9	852	34.5	707	28.6	1387	-18.7	833	60.1	334	24.1	220	15.9
Access for ischaemic stroke	4919	-10.2	-10.2	2102	42.7	1664	33.8	1153	23.4	4749	-9.9	2984	62.8	1088	22.9	677	14.3
30–64	924	3.5	3.5	85	9.2	515	55.7	324	35.1	457	9.3	60	13.1	222	48.6	175	38.3
≥65	3995	-12.8	-12.8	2017	50.5	1149	28.8	829	20.8	4292	-11.6	2924	68.1	866	20.2	502	11.7
Access for femoral neck fracture	3029	-5.8	-5.8	1584	52.3	750	24.8	695	22.9	8875	-5.6	5840	65.8	1803	20.3	1232	13.9
Access for knee replacement surgery	2179	-22.5	-22.5	694	31.8	949	43.6	536	24.6	4403	-28.5	2078	47.2	1500	34.1	825	18.7
30–64	490	14.5	14.5	61	12.4	262	53.5	167	34.1	684	-7.8	96	14.0	385	56.3	203	29.7
≥65	1689	-29.1	-29.1	633	37.5	687	40.7	369	21.8	3719	-31.4	1982	53.3	1115	30.0	622	16.7
Access for prostatic hyperplasia surgery (M) or malignant breast cancer surgery (W)	3461	-34.2	-34.2	723	20.9	1276	36.9	1462	42.2	6984	-14.2	1641	23.5	2379	34.1	2964	42.4
30–64	857	-11.1	-11.1	36	4.2	360	42.0	461	53.8	3568	-3.3	171	4.8	1327	37.2	2070	58.0
≥65	2604	-39.3	-39.3	687	26.4	916	35.2	1001	38.4	3416	-23.2	1470	43.0	1052	30.8	894	26.2
Access for malignant lung cancer surgery	933	-4.3	-4.3	269	28.8	369	39.5	295	31.6	682	9.3	187	27.4	236	34.6	259	38.0
30–64	203	35.3	35.3	12	5.9	119	58.6	72	35.5	204	20.0	16	7.8	81	39.7	107	52.5
≥65	730	-11.5	-11.5	257	35.2	250	34.2	223	30.5	478	5.3	171	35.8	155	32.4	152	31.8

Continued

Table 2 Continued

Indicators of hospital volumes and timeliness of procedures	Total		Educational level			Per cent change 2020 vs 2018–2019	Educational level			Per cent change 2020 vs 2018–2019			
	N	%	Low	Middle	High		Low	Middle	High				
											N	%	N
Access for malignant colorectal cancer surgery	2186		743	34.0	659	30.1	1876	867	46.2	523	27.9	486	25.9
	462	2.7	31	6.7	214	46.3	416	50	12.0	171	41.1	195	46.9
	1724	-14.1	712	41.3	445	25.8	1460	817	56.0	352	24.1	291	19.9
PTCA within 90' in ST-elevation myocardial infarction	1724	-8.2	378	21.9	607	35.2	501	240	47.9	163	32.5	98	19.6
	807	2.3	71	8.8	416	39.7	109	23	21.1	56	51.4	30	27.5
	917	-15.8	307	33.5	287	31.3	392	217	55.4	107	27.3	68	17.3
Replacement surgery within 48 hours in femoral neck fracture	1906	-3.8	978	51.3	450	23.6	6175	4049	65.6	1255	20.3	871	14.1
PTCA, percutaneous transluminal coronary angioplasty.													

nor any difference between the two age groups emerged (online supplemental figure 1 and online supplemental table 4). As seen for education, declines were consistently greater among women. The RIIs revealed that, although inequalities in access to ER, cardiovascular acute conditions and scheduled surgery were present before the pandemic, their magnitude did not substantially change in 2020 (online supplemental figures 2 and 3), except for total ER access and malignant lung cancer surgery among men of all ages, total ER access among women aged 30–64 years old and malignant colorectal cancer among women aged ≥ 65 years. It is worth noting that for total ER access, the gradient by deprivation index showed a tendency to widen, contrary to what happened for educational inequalities.

DISCUSSION

This multicentre study covering seven Italian geographical areas showed that, compared with 2018–2019, hospital volumes and, to a lesser extent, indicators of timeliness of procedures fell during the first 7 months of the COVID-19 pandemic, with larger declines among women and the elderly. At the same time, the low educated of both sexes, who are at higher risk of baseline hospital admission because of their greatest burden of diseases, experienced larger drops in ER access and most of the hospitalisation rates, with a resulting shrinkage (or widening when the RII was <1) of the educational gradient for volume indicators. Indicators of timeliness of procedures did not show any educational gradient neither before nor during the pandemic. The assessment of inequalities through the deprivation index returned a more nuanced picture with smaller differentials whose magnitude did not substantially change in 2020. Our results are in line with the scant evidence on the indirect effects of COVID-19 on healthcare inequalities showing that socially vulnerable individuals, women and the elderly have suffered more from disruptions in healthcare provision.^{12–14}

The reasons behind the global decrease in hospital utilisation during the pandemic are manifold and, arguably, deeply intertwined with the root causes of health inequalities. They span from the massive reorganisation of hospital care to the change in patients' behaviours, a possible decrease in disease incidence, and the presence of competing risks from COVID-19 and excess mortality.^{12 24}

In Italy as elsewhere, the sudden widespread of the pandemic has triggered a profound reorganisation of the national health service, including the hospital system, with changes in the supply of services other than COVID-19 diagnosis and treatment and suspension and cancellation of deferrable interventions such as elective surgery.²⁵ Concurrently, the warnings about the SARS-CoV-2 and the 'stay-at-home' messages issued by public authorities have likely induced a self-limitation of the demand in the population who worried about hospital contamination. The ability to access to and travel through healthcare services as well as to adhere to public health recommendations and realise whether a health problem is urgent enough to seek medical care or to wait and see is influenced by individual and system-level factors. These factors include SEP, culture and language, self-efficacy and perceived barriers, which together contribute to define the level of health literacy,²⁶ and system's complexity and acute care orientation.²⁷ In line with the results of a Danish study, we found that, during the pandemic, low educated people generally experienced lower access to hospital compared with their higher educated counterpart. This may result from increased barriers of access, mostly experienced by socioeconomically vulnerable populations, due to the unexpected system's rearrangement and

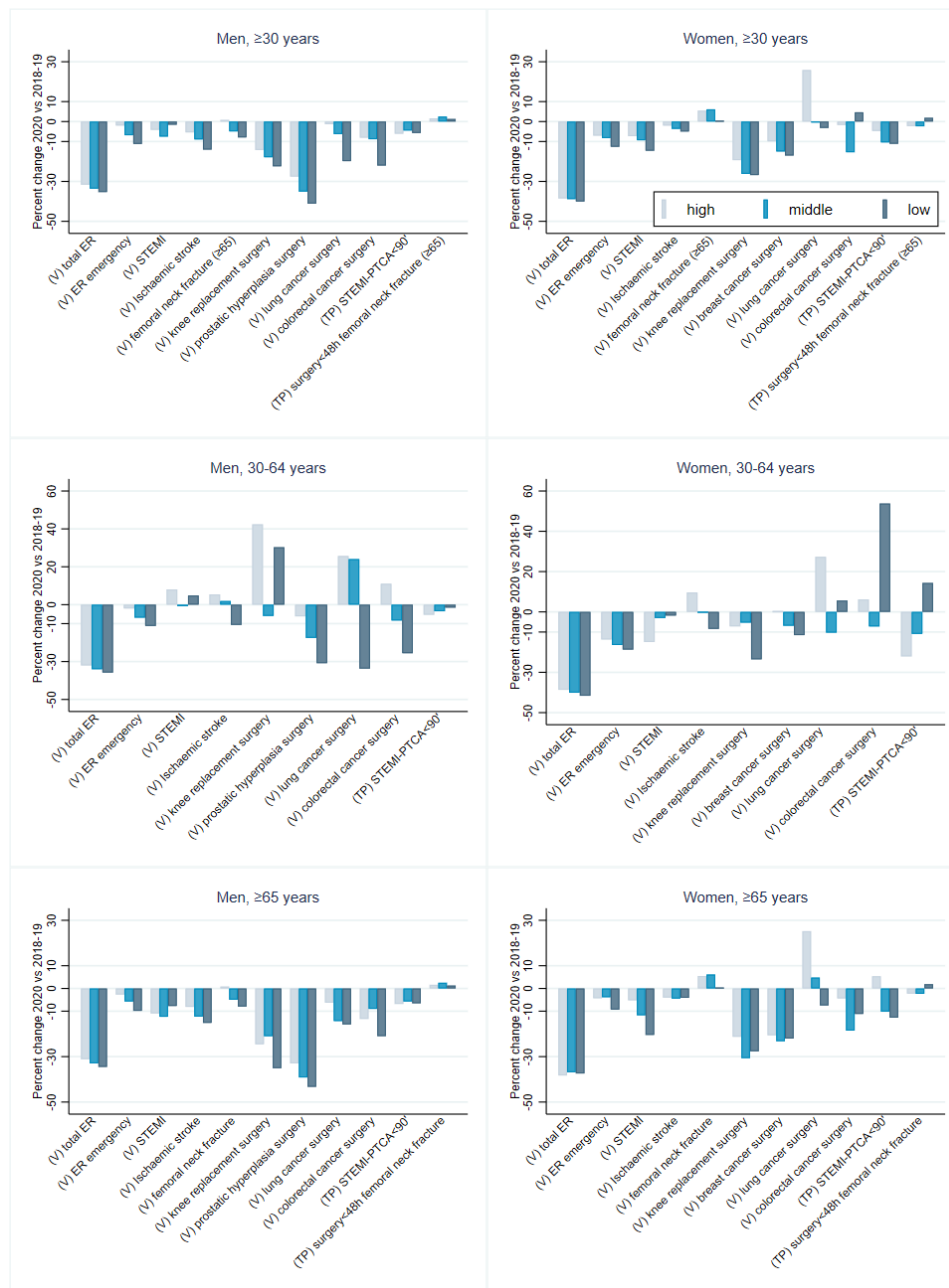


Figure 1 Relative per cent changes of age-standardised rates for the volume indicators and age-standardised prevalence for the timeliness of procedure indicators by educational level, sex and age group. ER emergency not available for Rome; IMA STEMI-PTCA <90' not available for Emilia-Romagna. ER, emergency room; PTCA, percutaneous transluminal coronary angioplasty; STEMI, ST-elevation myocardial infarction; TP, timeliness of procedures; V, volumes.

a restrictive interpretation of recommendations which led to avoidance of medical care for fear of COVID-19, for both potentially life-threatening conditions, such as myocardial infarction, and scheduled interventions, such as knee replacement.

Inequalities not only ran along the lines of SEP but also at the intersection with age and gender. Contractions in hospital utilisation were larger among the oldest subjects, a result that emerged also from a European multinational study,¹⁴ possibly linked to a greater fear of the infection consequences. We also found that women, especially those more disadvantaged, experienced larger drops in hospital access than men, another finding reported by previous researches.^{13 14} This may reflect gender inequalities stemming from women often playing a central caring role in the family setting and prioritising relatives' needs over

their own¹³ and a greater compliance with activity-restraining policy measures.²⁸

Decreased service utilisation may also result from an increase use of digital health solutions (eg, telemedicine, online and apps information exchanges, remote patient engagement),²⁹ whose utilisation has ramped up during the pandemic, though not uniformly at national level.³⁰ Our information systems cannot currently capture trends in digital health and therefore we could not ascertain whether digital solutions have had a differential reach across social groups (eg, larger use among deprived communities living in rural areas). However, it is worth recalling that overlooking equity issues in the development of digital care may further amplify existing health inequalities.³¹

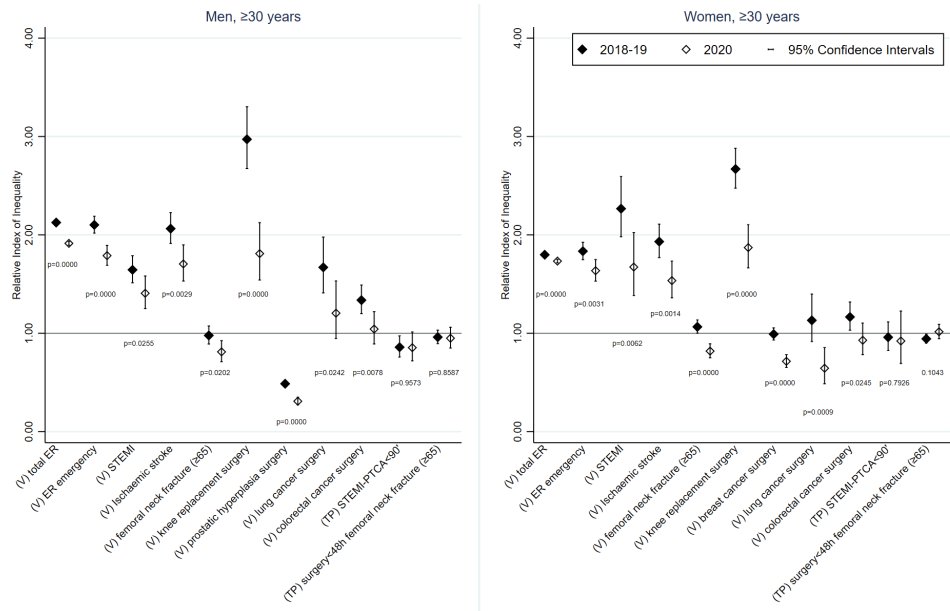


Figure 2 Relative Index of Inequality and 95% CIs by educational level, hospital volumes and timeliness of procedure indicators and period, and sex, all ages. ER emergency not available for Rome; IMA STEMI-PTCA <90' not available for Emilia-Romagna. ER, emergency room; PTCA, percutaneous transluminal coronary angioplasty; STEMI, ST-elevation myocardial infarction; TP, timeliness of procedures; V, volumes; p, p value for interaction.

The decrease in diseases' incidence, such as myocardial infarction and stroke, has also been claimed as a reason for reduced hospital access during the pandemic.² However, the lower utilisation is likely to be the effect of people avoiding hospitals, especially vulnerable groups as argued before, and eventually dying at home from untreated conditions rather than of a lower incidence. This hypothesis has been confirmed by Italian studies

reporting a significant reduction of hospitalisation for myocardial infarction but also a concomitant increase in the out-of-hospital cardiac mortality.^{32 33}

Italy has paid a very high toll in terms of mortality during the first pandemic phases³⁴; the risk of all-cause and COVID-19-related death was higher among the elderly³⁵ and among deprived groups.⁸ This competing risk from COVID-19 and

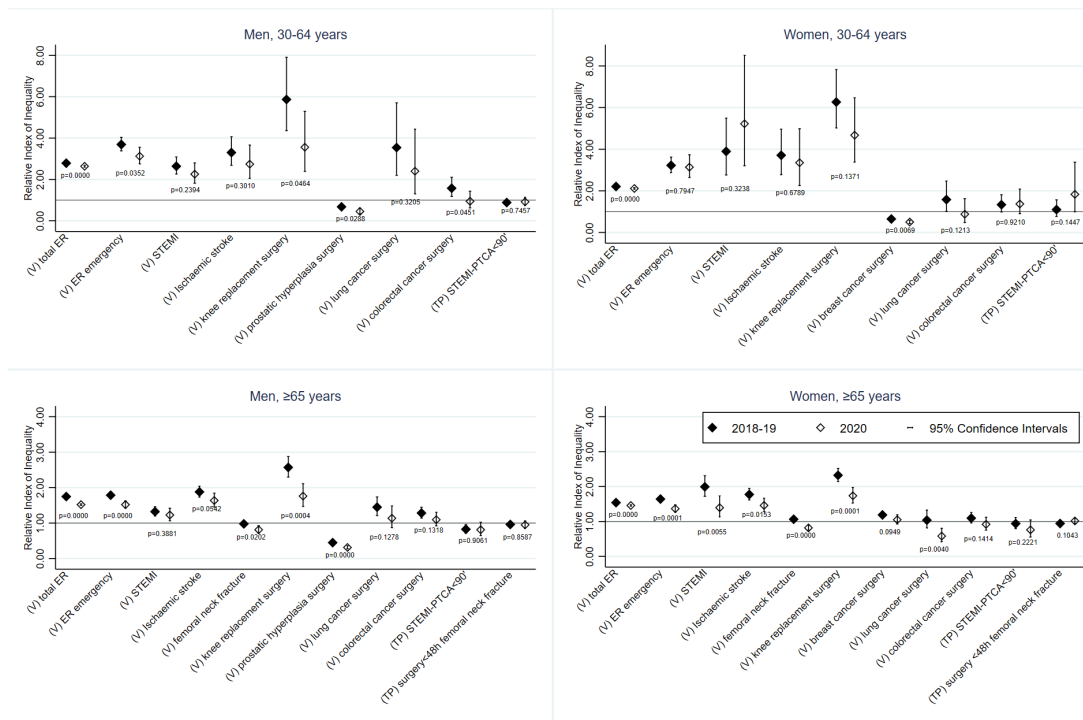


Figure 3 Relative Index of Inequality and 95% CIs by educational level, hospital volumes and timeliness of procedure indicators, period, sex and age group. ER emergency not available for Rome; IMA STEMI-PTCA <90' not available for Emilia-Romagna. ER, emergency room; PTCA, percutaneous transluminal coronary angioplasty; STEMI, ST-elevation myocardial infarction; TP, timeliness of procedures; V, volumes; p, p value for interaction.

excess mortality may have depleted the population in need of hospital assistance, especially the most disadvantaged and oldest pockets, and may partially explain the unequal decrease in hospital utilisation.

The good news is the absence of educational inequalities in PTCA interventions in patients with STEMI and surgery for femoral neck fracture in the elderly, whose timeliness was guaranteed during the pandemic. This result is in line with earlier findings of a study carried out in Lazio region that reported improvements over time in terms of equity due to an increasingly comparable management across educational levels for both PTCA in patients with STEMI and femoral neck fracture surgery.³⁶ Authors argued that the greater is the urgency, the more the inequality decreases and that healthcare organisation and quality seem to be more important than patients' choice in time-sensitive procedures. Our findings too suggest that patients' hospital management is not affected by individual SEP and that health inequalities mostly originate outside secondary care and are driven by wider determinants (eg, education, housing, working conditions, access to primary and preventive healthcare), which interact syndemically to shape people's exposure to noxious factors.

Estimates by deprivation did not show a clear social gradient nor significant changes between the pre-pandemic and pandemic period, even when we only considered the areas included in the main analyses by education (online supplemental table 5). A certain degree of exposure misclassification and, to a lesser extent, the ecological bias inherent to the metric may explain these results. Indeed, the deprivation index is based on 2011 sociodemographic data¹⁶ whose distribution has sensibly changed in the last decade, especially in metropolitan areas, and therefore it may not accurately describe the current distribution of the social and material deprivation and dilute the association between SEP and outcomes.

Strengths and limitations

This is the first study to assess socioeconomic inequalities in hospital utilisation for conditions other than COVID-19 during the pandemic in Italy, and one of the few in Europe. It draws upon health information and administrative registries that virtually cover the entire resident population minimising the risk of selection bias and allow to follow people over time³⁷ and explore multiple outcomes simultaneously. Moreover, thanks to its wide geographical coverage, it provides a robust approximation of the national situation during the first pandemic phases. The study is not exempt from drawbacks. As recalled above, the information on SEP came from the 2011 census and may not accurately describe the current situation. However, the educational level is deemed to be stable after the age of 30 years¹⁸ and therefore the 2011 data can still be considered a reliable source. Unfortunately, however, this information was available only for four areas. In order to implement a comprehensive and timely monitoring systems for health inequalities, a more complete availability of socioeconomic data on health information systems would be desirable, as also recommended by the Joint Action on Health Equity Europe.³⁸ Results cannot be generalised beyond national borders because of both the intensity with which the pandemic hit the country and the features of our national health system, which guarantees universal access to the population. Finally, the nature of our study did not allow to directly investigate the reasons behind the decrease in hospital utilisation and the underlying social patterns.

CONCLUSIONS AND IMPLICATIONS FOR POLICIES

During the first months of the COVID-19 pandemic in Italy, the low educated, the elderly, and the women experienced significant ER access and hospitalisation contraction with the consequent shrinkage of the social gradient.

Midterm and long-term consequences of this socially patterned reduction range from a surge in late-presenting conditions to a potential exacerbation of health inequalities among those groups who were already the most vulnerable before the pandemic. Besides public policies expanding social protection and public services,⁶ the healthcare service as a whole should contribute to contrast health disparities worsened by COVID-19. As recommended by the Independent Panel for Pandemic Preparedness and Response, to protect the most vulnerable populations' health in the pandemics that may occur in the future, countries need to prepare effective, coordinated and equity-oriented containment strategies.³⁹ To this extent, it is crucial to deliver a more efficient communication on how and when to safely access care to enable people, particularly the most disadvantaged, to navigate the system. It is also vital to strengthen primary healthcare and preventive services to implement locally appropriate interventions and foster community participation and empowerment. These efforts, along with those needed to act on the wider social determinants, require a sustained financial support in terms of human resources and infrastructures as envisaged in the Italian National Recovery and Resilience Plan⁴⁰ that represents an unprecedented opportunity to tackle health inequalities.

Author affiliations

¹Regional Health and Social Care Agency Emilia-Romagna Region, Bologna, Italy

²Epidemiology Unit, ASL TO3 Piedmont Region, Turin, Italy

³Regional Health Agency of Tuscany Region, Florence, Italy

⁴Department of Epidemiology, Regional Health Service Lazio, Rome, Italy

⁵Epidemiology Unit, Agenzia di Tutela della Salute della Città Metropolitana di Milano, Milan, Italy

⁶Regional Health Ministry, Milan, Italy

⁷Regional Healthcare Agency of Puglia Region, Bari, Italy

⁸Department of Health and Epidemiological Observatory, Regional Health Authority of Sicily Region, Palermo, Italy

⁹Department of Clinical and Biological Science, University of Turin, Turin, Italy

Collaborators The MIMICO-19 working group: Teresa Spadea (Epidemiology Unit ASL TO3, Piedmont Region, Turin, Italy), Roberto Gnani (Epidemiology Unit ASL TO3, Piedmont Region, Turin, Italy), Tania Landriscina (Epidemiology Unit ASL TO3, Piedmont Region, Turin, Italy), Roberta Onorati (Epidemiology Unit ASL TO3, Piedmont Region, Turin, Italy), Alessandro Migliardi (Epidemiology Unit ASL TO3, Piedmont Region, Turin, Italy), Giuseppe Costa (Epidemiology Unit ASL TO3, Piedmont Region, Turin, Italy), Olivia Leoni (Regional Epidemiological Observatory, Lombardy Region, Milan, Italy), Michele Ercolanoni (Regional Epidemiological Observatory, Lombardy Region, Milan, Italy), Chiara Di Girolamo (Regional Health and Social Care Agency of Emilia-Romagna Region, Bologna, Italy), Elena Berti (Regional Health and Social Care Agency of Emilia-Romagna Region, Bologna, Italy), Nicola Caranci (Regional Health and Social Care Agency of Emilia-Romagna Region, Bologna, Italy), Maria Luisa Moro (Regional Health and Social Care Agency of Emilia-Romagna Region, Bologna, Italy), Silvia Forni (Regional Health Agency of Tuscany Region, Florence, Italy), Valeria Di Fabrizio (Regional Health Agency of Tuscany Region, Florence, Italy), Sara D'Arienzo (Regional Health Agency of Tuscany Region, Florence, Italy), Fabrizio Gemmi (Regional Health Agency of Tuscany Region, Florence, Italy), Paola Colais (Department of Epidemiology, Regional Health Service, Lazio Region, Rome, Italy), Luigi Pinnarelli (Department of Epidemiology, Regional Health Service, Lazio Region, Rome, Italy), Mariangela D'Ovidio (Department of Epidemiology, Regional Health Service, Lazio Region, Rome, Italy), Maria Balducci (Department of Epidemiology, Regional Health Service, Lazio Region, Rome, Italy), Marina Davoli (Department of Epidemiology, Regional Health Service, Lazio Region, Rome, Italy), Caterina Fanizza (Regional Healthcare Agency of Puglia Region, Bari, Italy), Vito Petrarolo (Regional Healthcare Agency of Puglia Region, Bari, Italy), Giulia Piepoli (Regional Healthcare Agency of Puglia Region, Bari, Italy), Lucia Bisceglia (Regional Healthcare Agency of Puglia Region, Bari, Italy), Alessandra Allotta (Department of Health Services and Epidemiological Observatory, Sicily Region, Palermo, Italy), Achille Cernigliaro (Department of Health Services and Epidemiological Observatory, Sicily Region, Palermo, Italy), Salvatore Scodotto

(Department of Health Services and Epidemiological Observatory, Sicily Region, Palermo, Italy).

Contributors CDG, TS, RG and GCo designed the study. CDG conducted the analysis and drafted the first version of the manuscript and is responsible for the overall content as guarantor. RG and TS contributed to subsequent versions. CDG, TL, SF, MF, EC, GCe, AR, OL, CF and AA were involved in the data collection and preparation at local level. All authors were involved in critically revising the manuscript and approving the final version.

Funding The authors have not declared a specific grant for this research from any funding agency in the public, commercial or not-for-profit sectors.

Competing interests None declared.

Patient consent for publication Not required.

Provenance and peer review Not commissioned; externally peer reviewed.

Data availability statement Data are available upon reasonable request. The health administrative databases which are the data sources of this study are not publicly available; the unidentifiable aggregated data will be available from the corresponding author upon reasonable request.

Supplemental material This content has been supplied by the author(s). It has not been vetted by BMJ Publishing Group Limited (BMJ) and may not have been peer-reviewed. Any opinions or recommendations discussed are solely those of the author(s) and are not endorsed by BMJ. BMJ disclaims all liability and responsibility arising from any reliance placed on the content. Where the content includes any translated material, BMJ does not warrant the accuracy and reliability of the translations (including but not limited to local regulations, clinical guidelines, terminology, drug names and drug dosages), and is not responsible for any error and/or omissions arising from translation and adaptation or otherwise.

This article is made freely available for personal use in accordance with BMJ's website terms and conditions for the duration of the covid-19 pandemic or until otherwise determined by BMJ. You may download and print the article for any lawful, non-commercial purpose (including text and data mining) provided that all copyright notices and trade marks are retained.

ORCID iDs

Chiara Di Girolamo <http://orcid.org/0000-0002-6031-1009>

Roberto Gnani <http://orcid.org/0000-0003-1919-2199>

Antonio Russo <http://orcid.org/0000-0002-5681-5861>

REFERENCES

- Moynihan R, Sanders S, Michaleff ZA, *et al.* Impact of COVID-19 pandemic on utilisation of healthcare services: a systematic review. *BMJ Open* 2021;11:e045343.
- Roy CM, Bollman EB, Carson LM, *et al.* Assessing the indirect effects of COVID-19 on healthcare delivery, utilization and health outcomes: a scoping review. *Eur J Public Health* 2021;31:634–40.
- Spadea T, Di Girolamo C, Landriscina T, *et al.* Indirect impact of Covid-19 on hospital care pathways in Italy. *Sci Rep* 2021;11:21526.
- L'equit nella salute in Italia. *Secondo rapporto sulle disuguaglianze sociali in sanit.* Milano: Franco Angeli, 2014.
- Horton R. Offline: COVID-19 is not a pandemic. *The Lancet* 2020;396:874.
- Bambra C, Riordan R, Ford J, *et al.* The COVID-19 pandemic and health inequalities. *J Epidemiol Community Health* 2020;121:jech-2020-214401.
- Bassett MT, Chen JT, Krieger N. Variation in racial/ethnic disparities in COVID-19 mortality by age in the United States: a cross-sectional study. *PLoS Med* 2020;17:e1003402.
- Di Girolamo C, Bartolini L, Caranci N, *et al.* Socioeconomic inequalities in overall and COVID-19 mortality during the first outbreak peak in Emilia-Romagna region (northern Italy). *Epidemiol Prev* 2020;44:288–96.
- Mari-Dell'Olmo M, Gotsens M, Pasarin MI, *et al.* Socioeconomic inequalities in COVID-19 in a European urban area: two waves, two patterns. *Int J Environ Res Public Health* 2021;18:1256.
- Gustafsson PE, San Sebastian M, Fonseca-Rodriguez O, *et al.* Inequitable impact of infection: social gradients in severe COVID-19 outcomes among all confirmed SARS-CoV-2 cases during the first pandemic wave in Sweden. *J Epidemiol Community Health* 2022;76:261–7.
- Coronini-Cronberg S, John Maile E, Majeed A. Health inequalities: the hidden cost of COVID-19 in NHS Hospital trusts? *J R Soc Med* 2020;113:179–84.
- Andersen J, Strandberg-Larsen K, Gerdts T, *et al.* Risk of major cardiovascular events according to educational level before and after the initial COVID-19 public lockdown: a nationwide study. *J Epidemiol Community Health* 2021;75:829–35.
- Topriceanu C-C, Wong A, Moon JC, *et al.* Evaluating access to health and care services during lockdown by the COVID-19 survey in five UK national longitudinal studies. *BMJ Open* 2021;11:e045813.
- Arnault L, Jusot F, Renaud T. Economic vulnerability and unmet healthcare needs among the population aged 50+ years during the COVID-19 pandemic in Europe. *Eur J Ageing* 2021;1-15.
- Caranci N, Di Girolamo C, Giorgi Rossi P, *et al.* Cohort profile: the Italian network of longitudinal metropolitan studies (IN-LiMeS), a multicentre cohort for socioeconomic inequalities in health monitoring. *BMJ Open* 2018;8:e020572.
- Rosano A, Pacelli B, Zengarini N, *et al.* [Update and review of the 2011 Italian deprivation index calculated at the census section level]. *Epidemiol Prev* 2020;44:162–70.
- Agenzia Nazionale per I Servizi Sanitari Regionali. Programma Nazionale Esiti 2021. Available: <https://pne.agenas.it/index.php> [Accessed 1 Feb 2022].
- Galobardes B, Shaw M, Lawlor DA, *et al.* Indicators of socioeconomic position (Part 1). *J Epidemiol Community Health* 2006;60:7–12.
- UNESCO Institute for Statistic. International Standard Classification of Education - ISCED 2011 Montreal 2012. Available: <http://uis.unesco.org/sites/default/files/documents/international-standard-classification-of-education-iscsed-2011-en.pdf>
- Galobardes B, Shaw M, Lawlor DA, *et al.* Indicators of socioeconomic position (Part 2). *J Epidemiol Community Health* 2006;60:95–101.
- Revision of the European Standard Population - Report of Eurostat's task force - 2013 edition; 2013; Luxembourg.
- Deddens JA, Petersen MR. Approaches for estimating prevalence ratios. *Occup Environ Med* 2008;65:501–6.
- Moreno-Betancur M, Latouche A, Menvielle G, *et al.* Relative index of inequality and slope index of inequality: a structured regression framework for estimation. *Epidemiology* 2015;26:518–27.
- Birkmeyer JD, Barnato A, Birkmeyer N, *et al.* The impact of the COVID-19 pandemic on hospital admissions in the United States. *Health Aff* 2020;39:2010–7.
- Ministero della Salute. *CIRCOLARE del Ministero della Salute. Linee di indirizzo per la rimodulazione dell'attivita programmata differibile in corso di emergenza da COVID-19*, 2020.
- Berkman ND, Sheridan SL, Donahue KE, *et al.* Low health literacy and health outcomes: an updated systematic review. *Ann Intern Med* 2011;155:97–107.
- Sørensen K, Van den Broucke S, Fullam J, *et al.* Health literacy and public health: a systematic review and integration of definitions and models. *BMC Public Health* 2012;12:80.
- Galasso V, Pons V, Profeta P, *et al.* Gender differences in COVID-19 attitudes and behavior: panel evidence from eight countries. *Proc Natl Acad Sci U S A* 2020;117:27285–91.
- World Health Organization. *Global strategy on digital health 2020-2025*. Geneva: World Health Organization, 2021.
- Alta scuola di economia e management dei sistemi sanitari (ALTEMS). *Analisi dei modelli organizzativi di risposta al Covid-19: Universita Cattolica del Sacro Cuore*, 2021.
- Crawford A, Serhal E. Digital Health Equity and COVID-19: The Innovation Curve Cannot Reinforce the Social Gradient of Health. *J Med Internet Res* 2020;22:e19361.
- Campo G, Fortuna D, Berti E, *et al.* In- and out-of-hospital mortality for myocardial infarction during the first wave of the COVID-19 pandemic in Emilia-Romagna, Italy: a population-based observational study. *Lancet Reg Health Eur* 2021;3:100055.
- De Rosa S, Spaccarotella C, Basso C, *et al.* Reduction of hospitalizations for myocardial infarction in Italy in the COVID-19 era. *Eur Heart J* 2020;41:2083–8.
- Blangiardo M, Cameletti M, Pirani M, *et al.* Estimating Weekly excess mortality at sub-national level in Italy during the COVID-19 pandemic. *PLoS One* 2020;15:e0240286.
- Scortichini M, Schneider Dos Santos R, De' Donato F, *et al.* Excess mortality during the COVID-19 outbreak in Italy: a two-stage interrupted time-series analysis. *Int J Epidemiol* 2021;49:1909–17.
- Ventura M, Fusco D, Bontempi K, *et al.* Regional outcome evaluation program (P.Re.Val.E.): reduction of inequality in access to effective health care in the Lazio region of Italy (2012-2015). *PLoS One* 2018;13:e0194972.
- Demakakos P. Importance of population-based longitudinal studies to understanding the impact of COVID-19. *J Epidemiol Community Health* 2021;75:815–6.
- Public Health Agency Sweden. *Policy framework for action: monitoring health inequalities: joint action health equity Europe*, 2019.
- Independent panel for pandemic preparedness and response. *Covid-19: make it the last pandemic 2021*. Available: https://theindependentpanel.org/wp-content/uploads/2021/05/COVID-19-Make-it-the-Last-Pandemic_final.pdf
- Italian Government - Presidency of the Council of Ministers. *National recovery and resilience plan*, 2021. Available: <https://italiadomani.gov.it/en/home.html> [Accessed 26 Oct 2021].